

BY FOREST RIVER



**MBS**



**GTS**

# *Sunseeker*

BY FOREST RIVER



**GTS**

**MBS**

*Sunseeker*  
BY FOREST RIVER



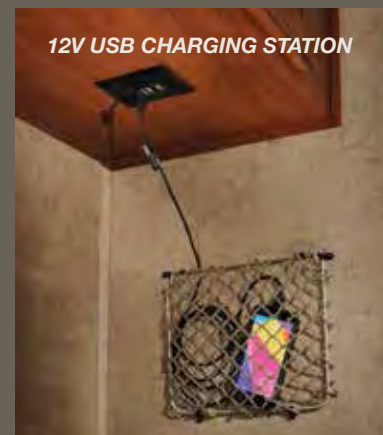


SUNSEEKER 3010DS: CHERRY / SPICE INTERIOR





EXCLUSIVE FRONT ENTERTAINMENT CENTER WITH FOLD OUT TWIN BEDS (optional)



12V USB CHARGING STATION



SUNSEEKER 2290S: CHERRY / RATTAN INTERIOR

*Sunseeker*  
BY FOREST RIVER

## DECORS



SPICE



RATTAN



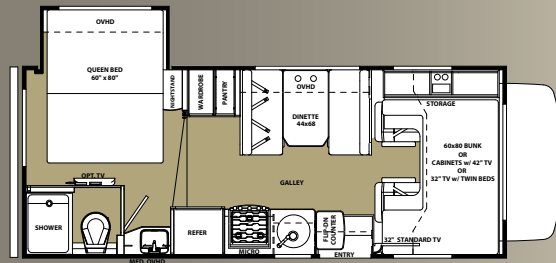
PUMICE



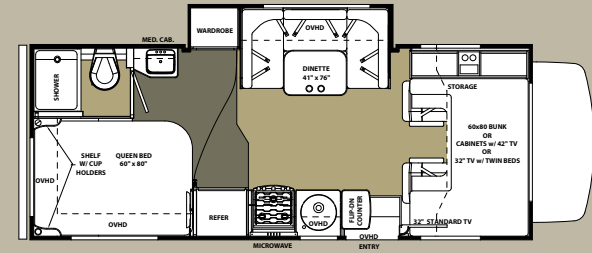
MAPLE



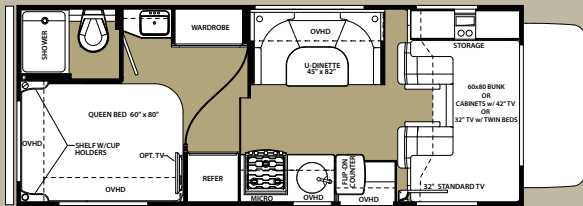
CHERRY



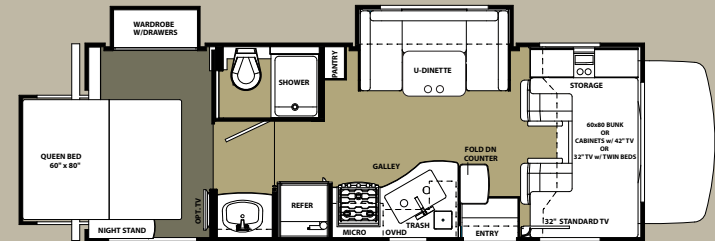
2250S LE



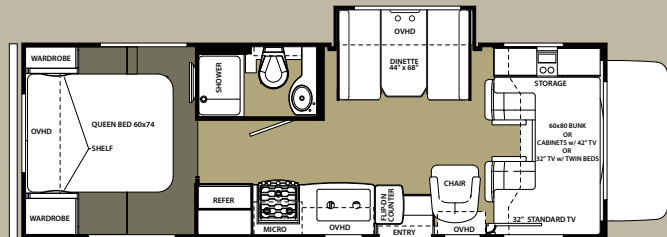
2290S



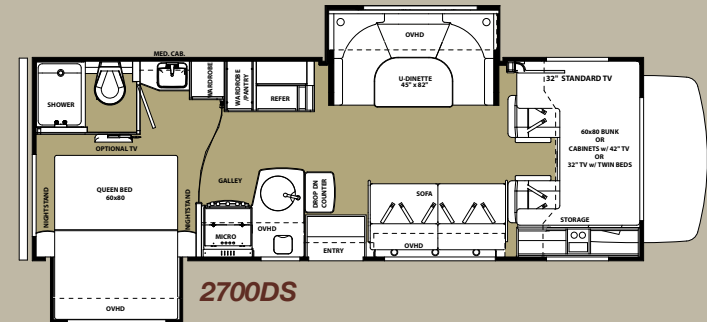
2300



2500TS



2650S



2700DS

## EXTERIOR OPTIONS



STANDARD EXTERIOR



PLATINUM FULL BODY PAINT

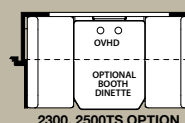


BORDEAUX FULL BODY PAINT

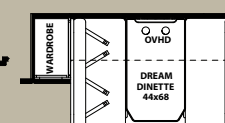




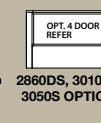
Diagram illustrating the optional sofa configuration with a table, labeled "OPTIONAL SOFA W/TABLE".



2300, 2500TS OPTION



2700DS, 3010DS OPTION



- 2860DS, 3010DS,  
3050S OPTION

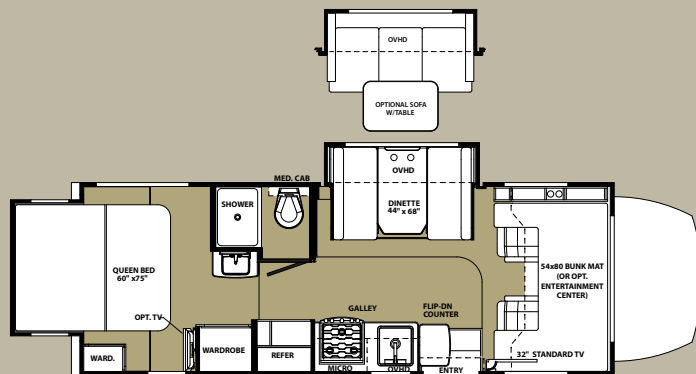
## SUNSEEKER SPECIFICATIONS

[illegible]

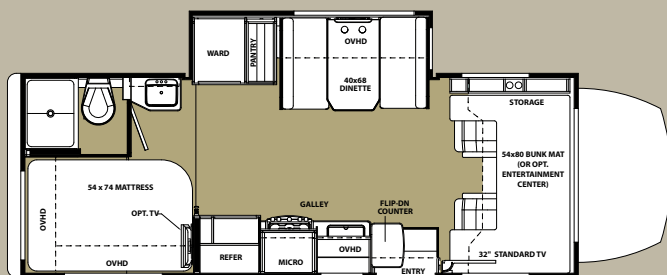
# MBS MERCEDES BENZ SERIES



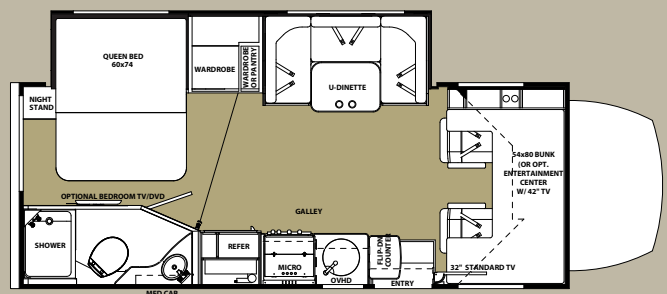
THE QUALITY YOU'VE COME TO EXPECT, PAIRED WITH A FUEL EFFICIENT DIESEL PLATFORM.



**MBS 2400R**



**MBS 2400S**



**MBS 2400W**



**MBS 2400R: CHERRY / PUMICE INTERIOR**  
(shown with optional sofa)



## BLUE TEC DIESEL ENGINE

ONE OF THE WORLD'S CLEANEST DIESEL ENGINES DELIVERS MORE POWER WHILE PRODUCING FEWER EMISSIONS THANKS TO BLUETECH SCR TECHNOLOGY. THE 3.0L V-6 ENGINE BOASTS 188HP AND 325 LB-FT OF RATED TORQUE.



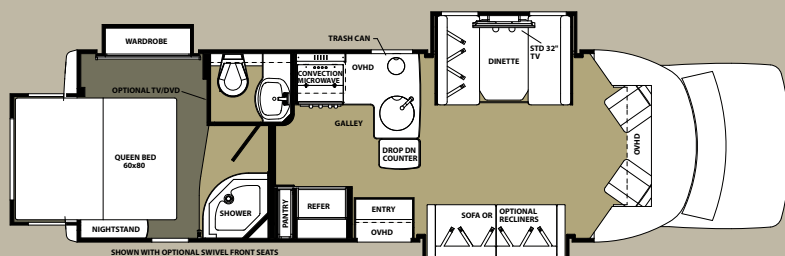
## MBS SPECIFICATIONS

	2400R	2400S	2400W
WHEEL BASE	170.3"	170.3"	170.3"
GVWR (LBS)	11030	11030	11030
UVW (LBS)	9852	9700	9927
GCWR (LBS)	15250	15250	15250
NCC	1178	1330	1103
FUEL CAP. (GAL)	26.4	26.4	26.4
HITCH RATING	4200	4200	4200
TOTAL LENGTH	24'11"	24'8"	24'11"
EXTERIOR HEIGHT W/ AC	11'3"	11'3"	11'3"
EXTERIOR WIDTH	94.5"	94.5"	94.5"
INTERIOR WIDTH	91"	91"	91"
INTERIOR HEIGHT	81"	81"	81"
FRESH WATER (GAL) W/ WH	41	41	41
GREY WATER (GAL)	30	33	32
BLACK WATER (GAL)	30	33	32
L.P. CAPACITY (GAL)	9.8	9.8	9.8
AWNING LENGTH	16'	15'6"	16'
EXTERIOR STORAGE (CU. FT)	75	67	50
WATER HEATER (GAL)	6	6	6

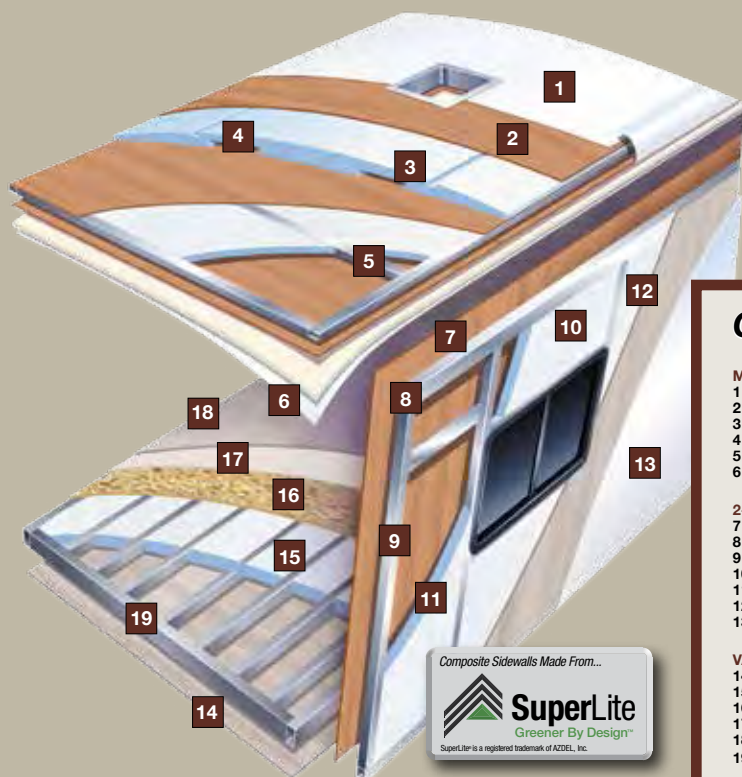
# GTS GRAND TOURING SERIES



WHEN YOU DON'T NEED A CAB OVER BED, THE STREAMLINED GTS IS THE PERFECT VEHICLE TO GET AROUND AND GET AWAY.



GTS 2800QS



2800QS: CHERRY / PUMICE INTERIOR

## CONSTRUCTION

### MULTI-LAYERED LAMINATED ROOF SYSTEM

- 1 CROWNED FIBERGLASS ROOF
- 2 LUAN DECKING
- 3 BLOCK FOAM INSULATION
- 4 A/C DUCTS
- 5 1.5" TUBULAR ALUMINUM FRAMING
- 6 INTERIOR CEILING MATERIAL

### 2-INCH VACUUM-BOND LAMINATED SIDEWALLS

- 7 DECORATIVE INTERIOR WALL BOARD
- 8 1.5" TUBULAR ALUMINUM FRAMING
- 9 EGS METAL BACKERS
- 10 BLOCK FOAM INSULATION
- 11 OPENING FRAMED IN ALUMINUM
- 12 SUPERLITE COMPOSITE - AZDEL
- 13 GELCOAT FIBERGLASS EXTERIOR

### VACUUM-BOND LAMINATED FLOOR SYSTEM

- 14 FIBERGLASS BOTTOM BOARD
- 15 BLOCK FOAM INSULATION
- 16 SEAMLESS FLOOR DECKING
- 17 BEAUFLOFLOORING (IN SOME AREAS)
- 18 CARPET WITH PAD (BEDROOM)
- 19 1.5" ALUMINUM FRAMING

## GTS SPECIFICATIONS

### CAPACITIES AND DIMENSIONS

#### 2800QS

WHEEL BASE	212"
GVWR (LBS)	14,500
UVW (LBS)	11,596
GCWR (LBS)	22,000
NCC	2,904
FUEL CAP. (GAL)	55
HITCH RATING	7,500
TOTAL LENGTH	30'4"
EXTERIOR HEIGHT W/ AC	10'8"
EXTERIOR WIDTH	95.5"
INTERIOR WIDTH	90"
INTERIOR HEIGHT	81" / 75.5"
FRESH WATER (GAL) W/ WH	49
GREY WATER (GAL)	42
BLACK WATER (GAL)	28
L.P. CAPACITY (GAL)	9.8
AWNING LENGTH	18'
EXTERIOR STORAGE (CU. FT)	73
WATER HEATER (GAL)	6



## 24/7 EMERGENCY ROADSIDE ASSISTANCE

For a worry-free ownership experience

Forest River includes one year of Coach-Net RV Technical & Roadside Assistance with each RV purchase. Whether new to the RV lifestyle or an experienced RV enthusiast, Forest River owners have 24/7 access to technical, operational and emergency road service coverage throughout the US & Canada. Coach-Net's fast, dependable service is just a phone call away.

# Coach-Net®

RV Technical & Roadside Assistance



### PRE-DELIVERY INSPECTION FACILITY

20,000 square feet of quality assurance. The bare essentials for a premium product. This state-of-the-art facility gives immediate daily feedback to production for quality assurance in every unit built.



Forest River, Inc. encourages our customers to purchase their Forest River products from a local dealership whenever possible for the following reasons:

- 1) Forest River, Inc. dealers are independently owned and operated businesses so priority service and scheduling is at their discretion and is often provided to customers that purchased their unit at that dealership.
- 2) Purchasing locally allows customers to establish meaningful relationships with a dealer, enhancing the RV experience through assistance with product questions, user tips or RV regulations for your state or country, and much more!
- 3) Canadian customers must meet requirements to bring an RV purchased out of the country to their home. These requirements may involve additional inspections and certifications, taxes and fees. Your local Canadian Dealer is a professional at meeting these requirements.
- 4) Scheduling timely warranty repairs and adjustments through a local dealership provides far greater flexibility and convenience to you, the customer!

It is the goal of Forest River, Inc. that all of our RV owners fully enjoy the RV experience and that customer satisfaction meets or exceeds their expectations!



### Learn More

Scan this barcode using a QR Reader on your smart phone to learn more about Forest River.



A Berkshire Hathaway company.

## STANDARDS AND OPTIONS

	SS	GTS	MBS	LE
<b>WARRANTY</b>				
12 Months/12,000 mile basic limited warranty	S	S	S	S
Chassis warranty (see owners manual)				
<b>SYSTEMS</b>				
Battery disconnect	S	S	S	S
Water heater bypass	S	S	S	S
(2) Deep cycle coach batteries	S	S	S	1
"Easy Access" battery in step-well	S	S	S	S
30 amp service with detachable cord	S	S	S	S
60 amp Progressive Dynamics Converter	S	S	S	S
6 gallon DSI gas/electric water heater	S	S	S	S
30,000 BTU furnace	S	S	S	S
Emergency start switch	S	S	S	S
Satellite/Cable connection	S	S	S	S
13,500 BTU ceiling ducted roof air	S	S	S	S
4.0 KW Onan Microquiet generator	S	S	S	S
3.6 KW Onan LP Generator	--	--	S	--
3.2 KW Onan Diesel Generator	--	--	O	--
Automatic generator transfer switch	S	S	S	--
Firestone Ride-Rite air helper springs	S	S	--	--
Water filtration system	S	S	S	--
Heated, enclosed holding tanks & valves	S	S	--	--
Arctic Package (12V tank heaters)	O	O	S	O
15k BTU A/C with heat pump (n/a diesel gen)	O	O	O	--
CO2, LP and smoke detector	S	S	S	S
Jack digital antenna	S	S	S	S
<b>EXTERIOR</b>				
2" Aluminum framed laminated sidewalls	S	S	--	S
1.5" Aluminum framed laminated sidewalls	--	--	S	--
Azdel Superlight composite substrate	S	S	S	S
Gel Coat exterior fiberglass	S	S	S	S
Block foam insulation	S	S	S	S
Power patio awning with LED light strip	S	S	S	S
Slide-out awnings	S	S	S	S
Fiberglass roof	S	S	S	S
One piece fiberglass front cap	S	S	S	O
Stainless steel wheel liners	S	S	S	--
Valve stem extensions	S	S	S	S
Roto-cast storage compartments	S	S	S	S
Driver side security light	--	--	S	--
Aluminum running boards	S	--	--	O
Fiberglass running boards	--	S	S	--
110 volt, GFI protected exterior receptacle	S	S	S	S
Tinted sliding windows	--	--	--	S
Tinted frameless windows	--	S	S	--
Heated, remote exterior mirrors	O	O	O	O
7,500 lbs hitch, 7-pin connector (E450)	S	S	--	--
5,000 lbs hitch, 7-pin connector (Chevy/E350)	S	S	--	S
4,200 lbs hitch, 7-pin connector	--	--	S	--
Spare tire	S	S	S	--
Roof ladder (N/A 2400R)	S	--	S	S
Integrated entry step	S	S	--	S
Power entry step	--	--	S	--
Outside shower	S	S	S	--
Automatic leveling system (4-point)	O	O	--	O
Stabilizer Jacks (2-point)	--	--	O	--
Full body paint	O	O	O	--
32" Outside 12v TV with DVD & speakers (2700DS, 3010DS, 3050S, 3170DS only)	O	O	--	--
Outside stereo	O	O	--	--
Exterior grill with quick connect (standard 2860DS)	O	O	--	--
Black tank flush	O	O	O	--

O: OPTION S: STANDARD --: NOT APPLICABLE

## CAB AREA

7" Touch screen radio with DVD, USB and Bluetooth	S	S	S	S
Sirius tuner and antenna	S	S	S	S
Cab area privacy curtain	S	S	S	S
Ultra leather driver and passenger seats	O	O	S	--
Power windows and door locks	S	S	S	S
Keyless entry (n/a Chevy)	S	S	S	S
Color back-up camera with rear view monitor	O	O	O	O
Side view cameras	O	O	O	--
GPS navigation system	O	O	O	O
Wood grain dash	--	--	S	--
Removable cab mat	--	--	S	--
Swivel driver seat (n/a Chevy, Power)	O	O	S	--
Power driver seat (Ford only)	O	O	--	--
Swivel passenger seat (n/a Chevy)	O	O	S	--

## KITCHEN

High-neck faucet	S	S	--	S
High-neck faucet with pull out sprayer	--	--	S	--
Recessed 3-burner range with flush glass cover	S	S	S	S
Range hood with fan and light	S	S	S	S
Oven IPO drawer	S	O	O	S
Microwave oven	S	--	--	S
Convection microwave (Standard in 3050S)	O	S	S	--
6 cu ft double door refrigerator	S	S	S	S
12 cu ft four door refrigerator with ice maker (2860DS, 3010DS, 3050S)	O	--	--	--
Raised wood refrigerator panel (n/a) 12cu ft	O	O	S	--
Full extension ball bearing drawer guides	S	S	S	S
Flip-up countertop extension	S	S	S	S

## BATHROOM

Porcelain toilet	S	S	--	S
Lightweight composite toilet with hand sprayer	--	--	S	--
Glass shower door	S	S	S	S
Towel bar, tissue, toothbrush and soap holder	S	S	S	S
Electric roof fan	S	S	S	S
Shower head with flexible extension	S	S	S	S
Shower skylight	S	S	S	S

## BEDROOM

Innerspring mattress	S	S	--	S
Upgraded memory foam mattress	O	O	S	O
Bedsread	S	S	S	S
Pleated night shades	S	S	--	S
Black out roller shades	--	--	S	--
Bedroom TV with DVD	O	O	O	--
Desk and wardrobe IPO bunks (3170DS Only)	O	--	--	--

## LIVING ROOM

Dream dinette (N/A with U-shape dinettes)	S	S	S	--
Visionary pull out sofa (60x74) (3010DS)	S	--	--	--
32" 12V flat panel adjustable side TV	S	S	S	S
Cab over cabinets with 42" TV (IPO side TV)	O	--	O	O
Cab over folding twin beds with 32" 12V TV (IPO side TV)	O	--	--	O
Surround sound with sub-woofer	O	O	O	--
Child seat head tethers in dinette	S	S	S	--
Fantastic in living room	O	O	O	O
LED lighting throughout	S	S	S	--
Dual recliners IPO Sofa (3010DS, 2800QS)	O	O	--	--
Dream dinette IPO U-Shape (varies)	O	--	--	--
12V USB charging station	S	S	S	--

FOR MORE INFORMATION PLEASE VISIT:  
WWW.FORESTRIVERINC.COM/SUNSEEKER

## YOUR LOCAL SUNSEEKER DEALER

**FREE MEMBERSHIP**  
to Forest River Owners' Group

www.forestriverfrog.com



914 CR 1 ELKHART, IN 46514 574.262.2212 800.445.2825 All information contained in this brochure is believed to be accurate at the time of publication. However, during the model year, it may be necessary to make revisions and Forest River, Inc. reserves the right to make changes without notice, including prices, colors, materials, equipment and specifications as well as the addition of new models and the discontinuance of models shown in this brochure. Therefore, please consult with your Forest River, Inc. dealer and confirm the existence of any material, design or specifications that are material to your purchase decision.

©2015 SUNSEEKER - a division of Forest River Inc. - A Berkshire Hathaway company